

# MAIN SEAL REPLACEMENT INSTRUCTIONS

Page 1 of 2

## CONNECTOR MAINTENANCE:

- A daily, weekly, and periodic inspection of the connector by competent person is recommended.
  - User must establish a regular interval for maintenance as determined by the user media and operational environment.
  - Periodically inspect connector and seal for wear, damage, and proper operation.
- Use only original **FasTest** spare parts that are designed for the application and are subject to strict quality control. See warranty.
- Difficulty of operation after continual use indicates need for lubrication or other maintenance.
- Lubricate on regular intervals under normal operating conditions. Lubrication should be compatible with user application.

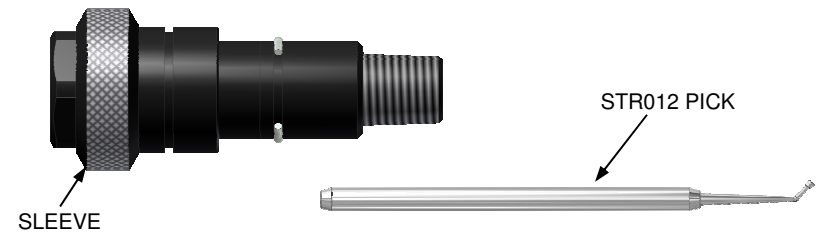
## FasTest, Inc. Product Warranty

FasTest, Inc. warrants its products against defects of workmanship and/or material for 1 YEAR from the date of the sale by FasTest, Inc. This warranty is void if the product is misused, tampered with, or used in a manner that is not in accordance with FasTest, Inc. recommendations and/or instructions. FasTest, Inc. is not liable for consequential or other damages including, but not limited to, loss, damage, personal injury, or any other expense directly or indirectly arising from the use of or inability to use its products either separately or in combination with other products. ALL OTHER WARRANTIES EXPRESSED OR IMPLIED, WHETHER ORAL OR WRITTEN, INCLUDING BUT NOT LIMITED TO WARRANTIES OR MERCHANTABILITY OR FITNESS FOR A PARTICULAR PURPOSE ARE EXPRESSLY EXCLUDED.

Remedy under this warranty is limited to replacement of the product or an account credit in the amount of the original selling price, at the option of FasTest, Inc. All allegedly defective products must be returned prepaid transportation to FasTest, Inc. along with information describing the products performance, unless disposition in the field is authorized in writing by FasTest, Inc.

## ST<sup>®</sup> Series Seal Replacement

### DESCRIPTION: ST<sup>®</sup> Connector Seal Replacement Main Seal Replacement Instructions -STB-



Please thoroughly read the instructions prior to operating and replacing main seals. The **ST** is designed to provide a safe, reliable leak-tight seal and connection when properly maintained and operated.

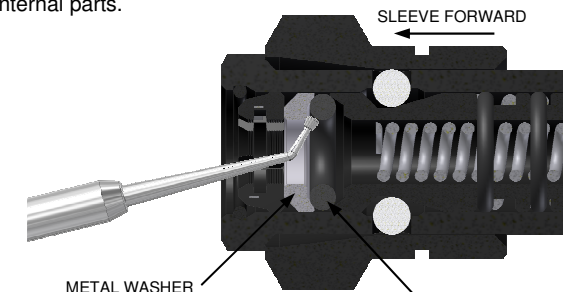
- The connector is designed to mate with a specific application. Verify the application prior to the introduction of pressure or processing. Use only in a safe environment. Safety chains and guards are recommended for all applications.
- Connectors are NOT designed for permanent connections and are for temporary connections only.

DO NOT EXCEED pressure rating as marked on connector or corresponding literature.

**NOTE: THE STR012 PICK IS SOLD SEPARATELY. CONTACT FASTEST FOR DETAILS ON PURCHASING THIS TOOL.**

### Old Seal Removal:

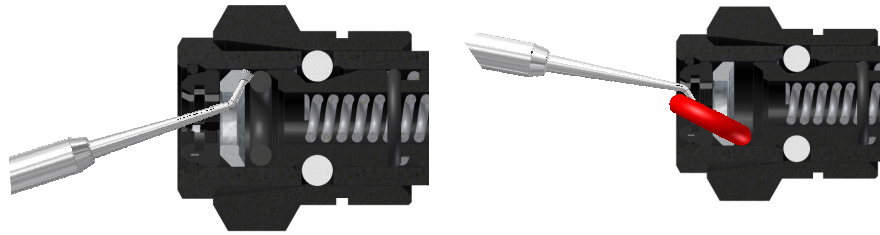
1. Move connector sleeve forward to the disconnect position, opening the gripping collet for easy access to internal parts.



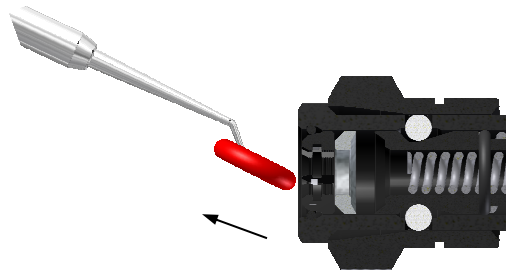
# MAIN SEAL REPLACEMENT INSTRUCTIONS

Page 2 of 2

2. Insert the round knobbed end of the STR012 repair pick (OR LIKE TOOL) between the front part of the seal, and washer.
3. Push knobbed end between seal and washer until repair pick touches connector wall. Roll pick 180° between thumb and fingers to get the curved portion of the pick behind the seal. By placing your other thumb over the edge of collet opposite the pick, you can work at one point on the seal. Do not rotate the pick around the I.D. of the connector as this may cause loosening of the gripping collets.

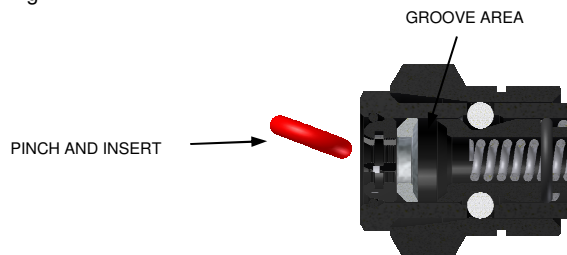


4. Using the knobbed end as a hook, dislodge the seal and pull it slowly out the connector throat.

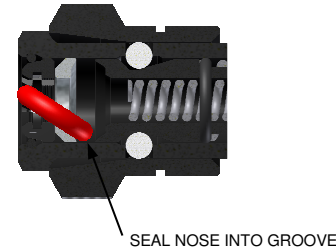


## To Install Replacement Seal:

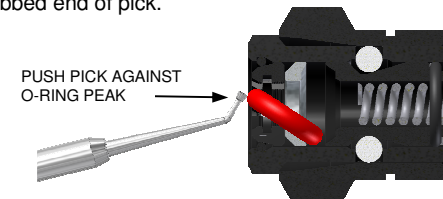
1. Liberally coat the new replacement seal with lubrication. White petroleum is used during initial assembly of standard **ST** connectors.
2. Begin replacement of seal by manually starting the seal into the groove area. Pinch with fingers and install into opening.



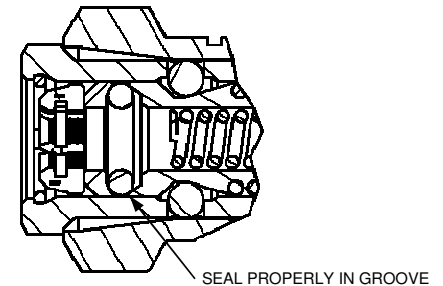
3. The knobbed end of the pick will assist in positioning the seal nose into the groove. This starting position is important for successful installation of the seal.



4. After nose of seal is in place, slowly press down on the back part (peak) of the seal using the knobbed end of pick.



5. The seal will slide into the groove area. If the nose of the seal slides out of position, re-install and repeat steps 1 thru 4.



6. When the new seal is in place, it will fit clearly into the groove area. If a portion of the seal is inverted or can be seen as not in the groove, use the knobbed end of the pick to assist in pulling the seal into the groove. If this is unsuccessful, remove the entire seal and start the installation procedure again.

7. After the replacement seal is in place, actuate the **ST** connector sleeve once to make sure the connector action is correct.