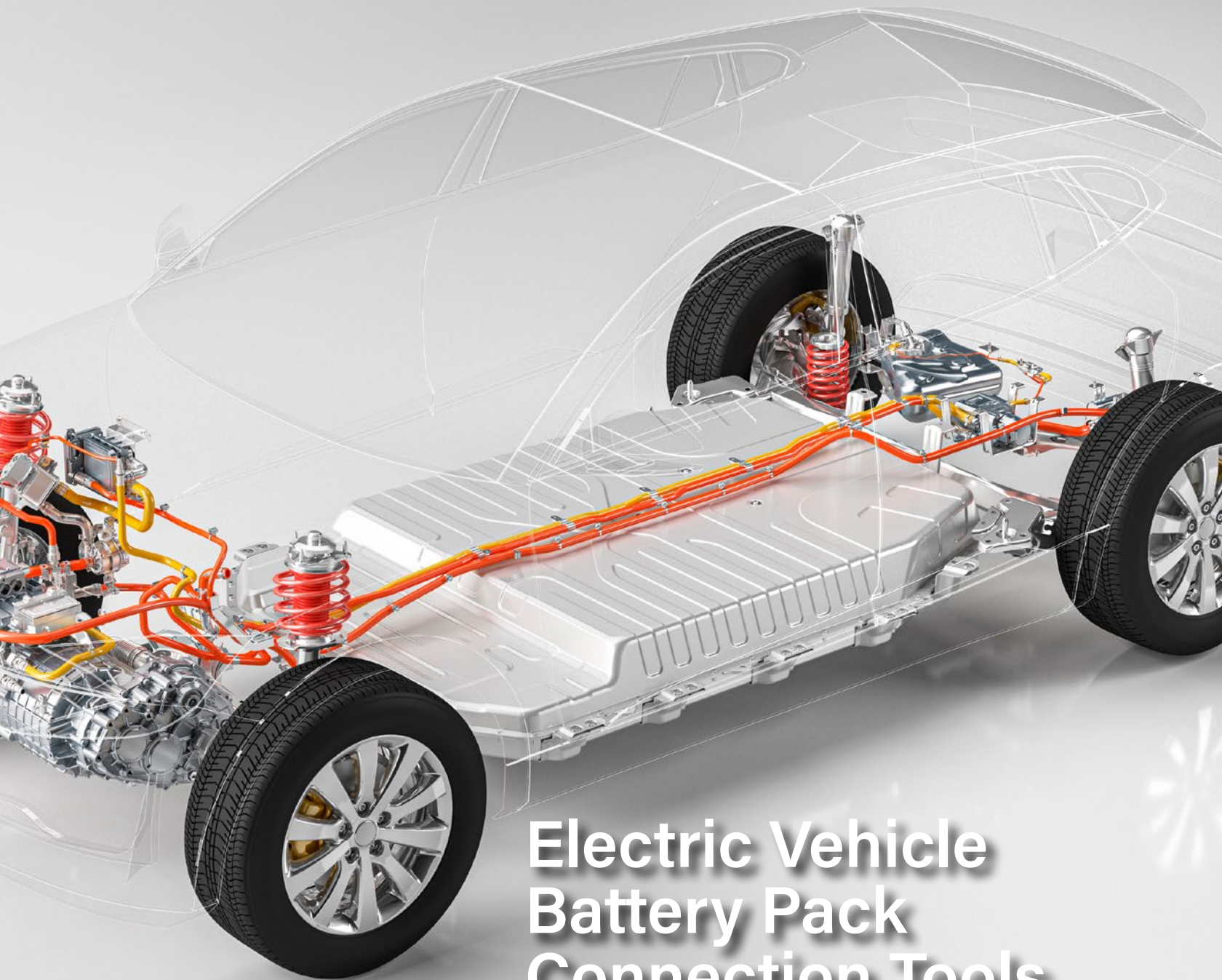




FASTEST[®]



Electric Vehicle Battery Pack Connection Tools

Improve Quality, Efficiency,
& Precision of Leak Testing

fastestinc.com





FASTEST[®]

Global Leader in Industrial Sealing Connection Technology

Vehicle Systems | HVAC-R | Compressed Gas | Medical Life Science | Aerospace

At FasTest, our mission is to reduce our customer's manufacturing costs, improve testing safety, and enhance leak testing processes.

As an industry leader of Sealing and Connection Technologies, FasTest offers standard products for most ports/threads/tubes, and a dedicated team of Custom Design Experts to engineer optimized solutions for demanding applications. Connect fast, seal reliably, test safely.



BROAD OFFERING

Extensive standard and Custom Engineered Solutions.



INTELLIGENT TOOLS

Sensing & data generation tools that support process automation.



APPLICATION EXPERTS

Optimized solutions, tailored to your unique needs.



GLOBAL SUPPORT

Global distribution network provides local, responsive support.



SUPERIOR QUALITY

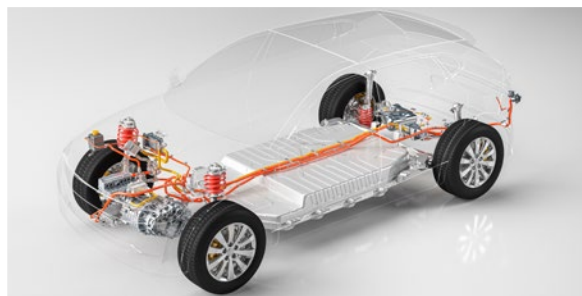
ISO 9001 Certified; Robust tools improve the quality of your product.

On-Highway & Off-Highway Component Expertise

Internal Combustion Engines



Electric Vehicle Battery Packs



Vehicle System Components





Leak Test Connection Tools for Every Port & Thread



Accurate Connection & Seal

Precision engineered tools provide the highest quality connection and seal for accurate testing.



Reduce Repetitive Motion Injuries

Easy-to-use one hand operation, eliminate the painful twisting motions of standard fittings.



Safely Connect in Seconds

FasTest's ergonomic tools instantly attach to ports and threads - no wrenches, thread tape, or sealants for a leak-tight seal.



Safety First

Multiple safety features are included in every tool, including pressure assisted sealing technology.



Durable Connection Tools

Engineered for precision and durability to withstand rigorous testing environments.



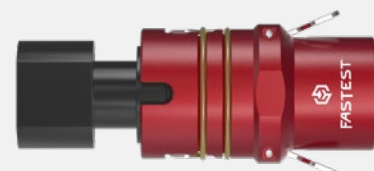
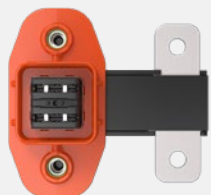
Quality Tools, Quality Tests

Engineered for the highest quality connection and seal. Reduce False Failures caused at the connection points.

Battery Pack Leak Testing

- » Improve Speed & Accuracy of Battery Pack Testing
- » Tailored Connection Tools for a Full Battery Pack Leak Test

FasTest's Dedicated Team of Engineers work with you to develop the ideal connectors to meet your needs/requirements. We want to evolve with our customers to develop world class Connection Tools and technology.



» Identify & Eliminate Leaks Allowing Condensation/Water into the Cell, and Leaks Allowing Electrolytes Out of the Cell

Ensure all connections ports on battery are sealed and leak-tight to avoid the risk of contamination to battery cell. Fastest offers leak test Connection Tools for all electrical connection fittings.

» Designs for Automation

Automation friendly and customizable to any electrical header connection. Tailored Connections Tools to fit your battery.

» Improve Quality & Reduce Warranty Claims

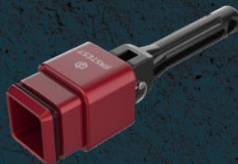
Warranty claims are inherently expensive, especially when they involve an engine or battery. Precision engineered tools provide the highest quality connection and seal for accurate testing.

Battery Pack Connection Tools



BEVP

Automated Connections to BEV Standard Ports



BEVM

Manual Connections to BEV Standard Ports



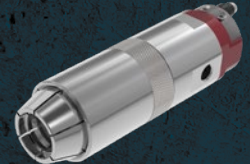
VDA

VDA Standard Ports (150 psi/10.3 bar)



70

External Custom Tube Feature Connections (750 psi/51 bar)



FXP

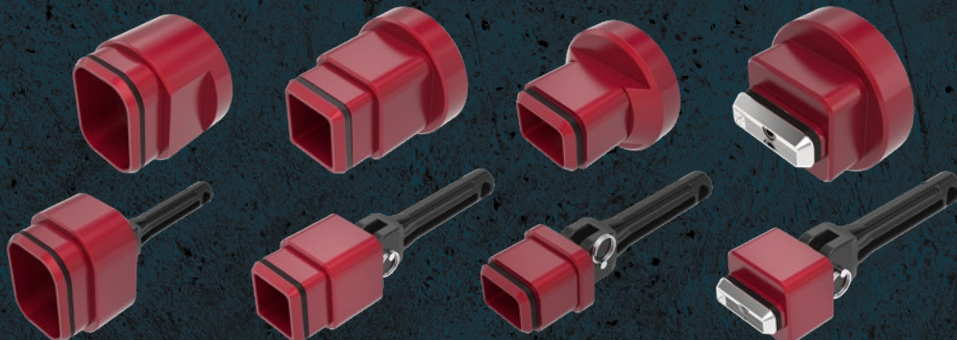
High Pressure Connections to Standard Threads (5,000 psi/345 bar)



DON'T SEE A SOLUTION FOR YOUR APPLICATION? Submit a custom application form and drawing to fastsales@fastestinc.com or to your local distributor.

Custom BEV

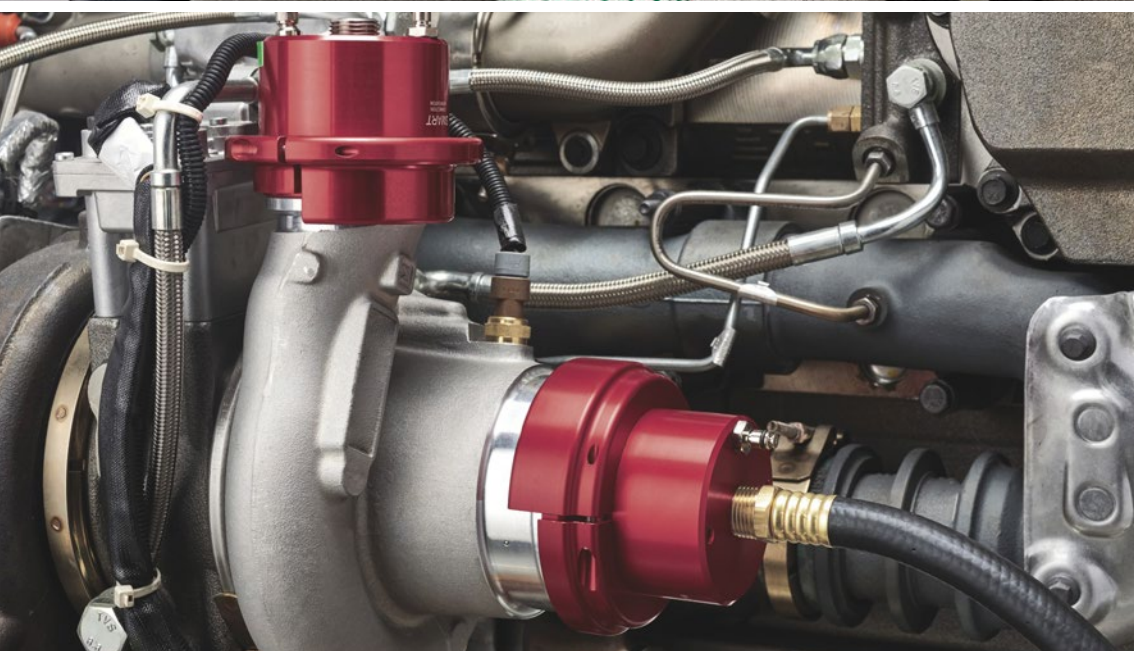
Examples of BEV we have tailored for our customers. »



Custom Engineered Solutions

» We Transform Connection Tools into Tailor-Made Solutions to Fit Your Exact Requirements

Our Team of Custom Engineered Solutions will work with you to identify and design the optimal Connection Tool for your testing needs. Having difficulty sealing a unique port? Issues with clearance? Let us help.





Initial Assessment

Contact fastsales@fastestinc.com to submit a custom application form.



Mapping the Application

Our Team of Custom Engineered Solutions will work with you to provide optimal designs.



Complete Connection Tool Package

We work with your Team to provide complete package of Connection Tools tailored to your testing requirements.



Setup Support

We work with you to ensure a seamless integration.



Continual Support

After setup, we maintain support to make sure all Connection Tools are working at peak performance.

FASTEST GLOBAL DISTRIBUTION NETWORK



Interested in Learning More? Have Questions?

Contact Us.

fastsales@fastestinc.com

651.251.9741



Designed in the U.S.A.

Headquarters | USA

1646 Terrace Drive, Roseville, MN, 55113-1317

Phone: 651.645.6266 • Fax: +1.651.645.7390 • www.fastestinc.com

Shenzhen | China

Room#1013,1015, A9 Building, Tianrui Industrial Park

No.35 Fuyuan 1st Road, FuHai residential district,

Baoan Shenzhen, China 518103

(755) 27084905 • fastsalescn@fastestusa.cn