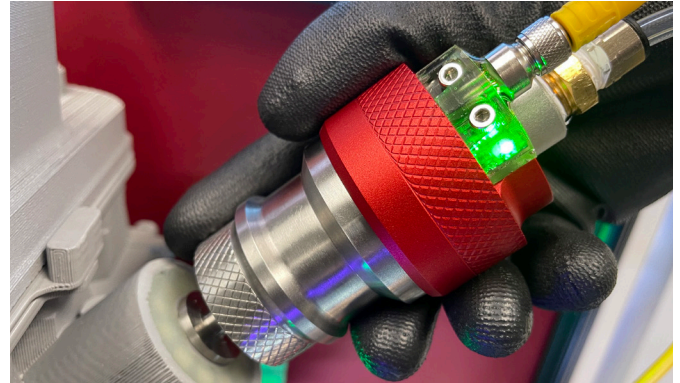


# 60 ICON

Sleeve actuated external grip and seal connection tool for threaded applications.

## CONNECTS TO:



## SPECIFICATIONS

Pressure Rating	Operating Temperatures	Materials of Construction
Vacuum to 750 psi (51 bar)	-40°F to +250°F (-40°C to +121°C)	Stainless Steel, Anodized Aluminum
Termination Port		Seal Material*
NPT, BSPP (G)		Buna-N

\* Additional seal material types available, consult factory.

## ACTUATION METHOD

**Manual Sleeve:** Easy, ergonomic sleeve action eliminates repetitive twisting and turning - push to connect, pull to release

## ICON™ TECHNOLOGY

 SURE SEAL™

## ACCESSORIES

Visit [fastestinc.com](http://fastestinc.com)

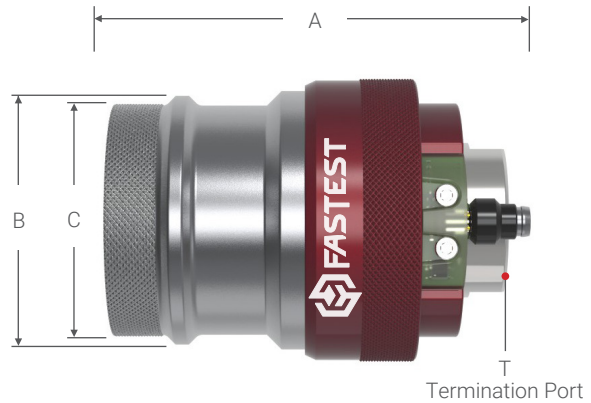
- 1 SURE SEAL™ - Instant LED feedback verifies a good connection onto the threaded port.
- 2 Instant external threaded connection with floating piston to ensure proper face / ID sealing position
- 3 Collet design locks securely into external threads or behind the threads
- 4 Connect and seal to compression fittings, NPT, SAE 37° "AN" and 45° flare male threads - custom sizes also available
- 5 Optional internal shut-off valve stops flow upon disconnection

# 60 / EXTERNAL SEALING CONNECTION TOOL

» Sleeve actuated external grip and seal connection tool for threaded applications.

## DIMENSIONS

inch (mm)



Ordering Information				Dimensions			
Connects To	Part Number*	Replacement Seals Bulk Pack (5)	Rebuild Kits	A	BØ	CØ	T

### 60 Series | NPT Threads

1/8 NPT	60G1T02CV04*	S1105B70	R60CVBG1	3.49 (88.6)	1.65 (41.9)	1.47 (37.3)	1/4 NPT/BSPP (G)
1/4 NPT	60G1T04CV04*	S1109B70	R60CVBG1				
3/8 NPT	60G1T06CV04*	S1110B70	R60CV06	3.72 (94.5)	1.92 (48.8)	1.74 (44.2)	3/8 NPT/BSPP (G)
1/2 NPT	60G1T08CV04*	S1112B70	R60CVBG2				
3/4 NPT	60G085CV04*	S1115B70	R60CVBG3	3.72 (94.5)	2.31 (58.7)	2.13 (54.1)	3/4 NPT/BSPP (G)
1 NPT	60G1T16CV04*	S1212B70	R60CV16				

### 60 Series | SAE 37° Flare for JIC and AN Male Fittings

-4 [7/16-20]	0G049CV04*	S1010B70	R60CVBG1	3.49 (88.6)	1.65 (41.9)	1.47 (37.3)	1/4 NPT/BSPP (G)
-6 [9/16-18]	60G069CV04*	S1012B70	R60CVBG1				
-8 [3/4-16]	60G089CV04*	S1014B70	R60CVBG2	3.72 (94.5)	1.92 (48.8)	1.74 (44.2)	3/8 NPT/BSPP (G)
-10 [7/8-14]	60G109CV04*	S1016B70	R60CVBG2				
-12 [1-1/16-12]	60G129CV04*	S1116B70	R60CV16	3.72 (94.5)	2.31 (58.7)	2.13 (54.1)	3/4 NPT/BSPP (G)

### 60 Series | SAE 45° Flare Threads

-4 [7/16-20]	60GA04CV04*	S1010B70	R60CVBG2	3.49 (88.6)	1.65 (41.9)	1.47 (37.3)	1/4 NPT/BSPP (G)
-6 [5/8-18]	60GA06CV04*	S1012B70	R60CVBG2				
-8 [3/4-16]	60GA08CV04*	S1014B70	R60CVBG2	3.72 (94.5)	1.92 (48.8)	1.74 (44.2)	3/8 NPT/BSPP (G)
-10 [7/8-14]	60GA10CV04*	S1016B70	R60CVBG2				
-12 [1-1/16-14]	60GA12CV04*	S1117B70	R60CV16	3.72 (94.5)	2.31 (58.7)	2.13 (54.1)	3/4 NPT/BSPP (G)

Dimensions: inch (mm)

**NOTE:** \*For Analog Output Signal, add "ANA" to Part Number. For Solid State Relay, add "SSR" to Part Number. Table above shows common connections. Additional sizes available for 60 Series connectors.

**Port Specifications:** NPT per SAE J476; SAE 37° Flare per SAE J514; SAE 45° Flare per SAE J512/513



# ICON™

## INTELLIGENT CONNECTION TECHNOLOGY

FasTest's ICON™ adds sensing capabilities to our mechanical Sealing Connection Tools. ICON™ Tools include instant LED visual feedback and data output to improve sealing connection accuracy, maximize production efficiency, and optimize maintenance.



### ICON™ features:



#### SURE SEAL™

Instant LED feedback verifies a good connection prior to starting a test.

### System Overview:

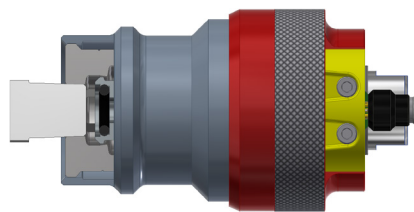
CONNECTED

Verify connections are good prior to starting a leak test and provide operators instant positive feedback to simplify training.



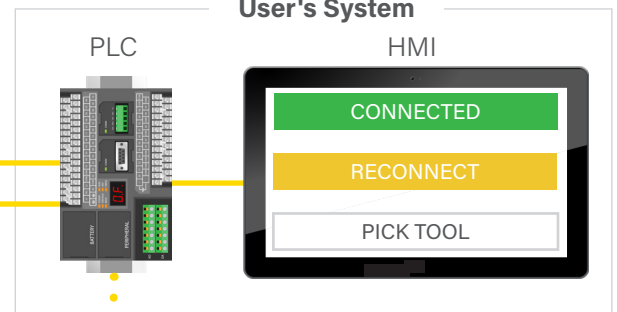
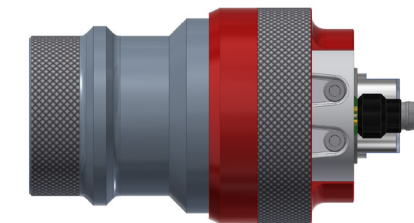
RECONNECT

Recognize short connects before hazardous spills occur in functional testing, or prevent wasteful False Positive results in leak testing.



PICK TOOL

Controllable LED signals operator to use specific tool.



Standalone install or tie into PLC



PROGRAMMING TOOL

- Quickly setup ICON™ Tools
- Eliminate the need for PLC programming
- Can be powered from wall adapter (included) or from a PLC (24VDC)

**NOTE:** Solid State Relay and Analog output options available.